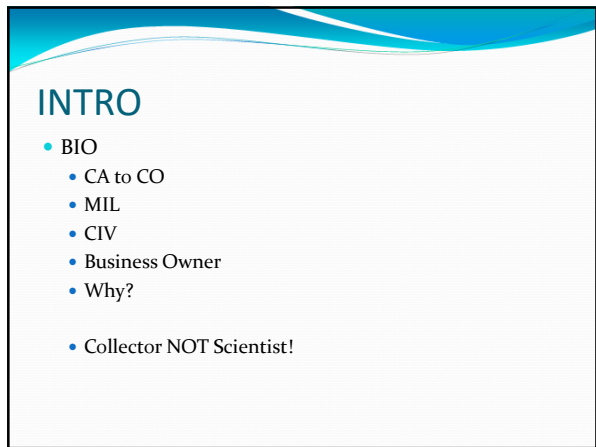




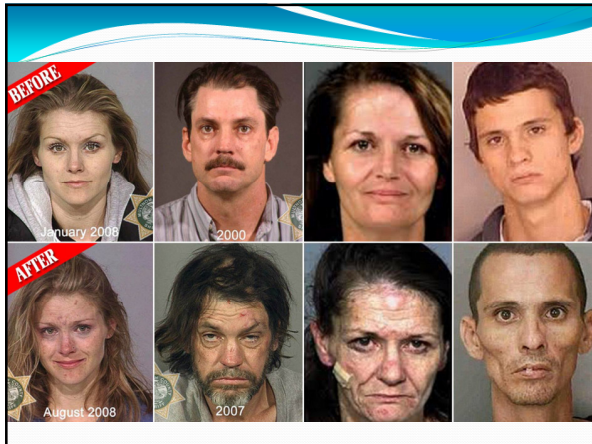
1



2



3



4

PURPOSE

- ENSURE YOU ARMED WITH RULES
- BETTER UNDERSTANDING
- YOUR POSITION
- MY POSITION
- CPS **CHILDREN COME FIRST**

5

HISTORY of DRUG TESTING

- BUSINESS (HR)
- MILITARY (FED)
- DOT (TRANS/SAFETY)
- OSHA=ZERO

6

TYPES OF TESTS

- BLOOD (6-36 hours)
- URINE (18-72)
- HAIR/FINGERNAIL (7-90 days)
- SALIVA (1-24)
- SWEAT (12-24)
- BREATH (Instant - x hours)

7

PROCEDURES

- RIGHTS/LAW MS
- ID/PAPERWORK
 - Lab/Instant/both
- SOLO/MONITORED/OBSERVED
 - Hair cut AT THE SKIN
- SEALED
- CHAIN OF CUSTODY
- RESULTS
- MRO

8

Drugs

- Amphetamines
- Barbiturates
- Buprenorphine
- Benzodiazepines
- Cocaine
- Methamphetamines
- MDMA
Methylenedioxymethamphetamine
- MTD (Methadone)
- OPI300
- OXY
- PCP
- THC
- Alcohol

9

DRUGS (Designer)

- K2, K3, K4 (Spice)
- Ketamine
- Bath Salts
- Kratom
- Huffer cans
- Nitrous
- Many Many More

10

Gas Chromatography Mass Spectrometry (GC-MS)

- “Gold Standard”
- Upheld in all courts
- Two-step Process (magic)
 - Step One: Separation of particles and recorded in GC
 - Step Two: Destruction of samples, MS spectrometry analyzes molecular weight

11

Urine

- Collected either unwatched or observed
- Temp strip
- Instant or Lab
 - Instant results by lines on cup or strip
 - Lab GC/MS
- Someone else’s urine
 - Condoms, squeeze bottles, med bottles, etc
 - Whizzinator
- Fake Urine
- Sound and smell

12

Hair Folicle

- 5 Labs in the US
- Environment exposure
- Inside blood wic
- Rings on a tree
- Cut at scalp (7days internal)
- Shampoos, bleach, etc

13

Saliva

- Non Intrusive
- Easy to beat
- Accuracy for THC low
- Short duration of detection

14

CROSS EXAMINATION TIPS

- ID? TWIN, COUSIN, FRIEND
- QUALIFICATIONS?
- PAPERWORK – signed/consent
- HAIR- HEAD OR BODY?
- CCF WHO, WHAT, WHERE AND WHEN?
- RESULTS, DID IT GO TO MRO?
- LEVELS UP OR LEVELS DOWN?
- CHEATING...PROOF?

15

Alcohol

- Mouth Strip Instant
 - 0.00 - 0.04+
- Breath Alcohol Test (Breathalyzer)
 - 0.00 - 0.50
- DUI 0.08
- Urine ETG (80 hours)
- Hair 3-6 months and consumption estimate

16

Results Timeline

- Instant: 5 minutes max
- Urine: 24 hours neg, 3 bus pos
- Hair: 2 bus days neg, 3-4 pos
- MRO 1-3 days based on contact of donor

17

CPS

- Cheaters
- Outbursts
- Family members' potential
- Jail
- Houses
- Positive Children- ALL AGES
- Empathy vs Sympathy
- Success with constant testing

18

Prices

- Urine Instant \$30
- Urine Lab \$44
- Hair (5) \$79
- Hair ADD \$85
- Hair Oxy \$95
- Up to 10 panel \$214

- 55 cents per mile.....

19

STORIES

- FEMALE COUSINS
- METH CHILDREN HAIR
- DNA ID CASE
- JORDAN DOT
- PEE THROWN
- WHIZZINATOR AND OTHER CONTAINERS
- CONSENT AND HAIR
- TOILET ISSUES

20

???? QUESTIONS ????

- Michael Shilling
- (601) 812-8546 office
- mike@mobiledrugscreen.com

- SAMSHA
- Hotline (800) 662-HELP

21

RESOURCES

- https://www.dea.gov/sites/default/files/2020-04/Drugs%20of%20Abuse%202020-Web%20Version-508%20compliant-4-24-20_o.pdf
- <https://www.samhsa.gov/>
- <https://msdh.ms.gov/msdhsite/index.cfm/30,748,88,pdf/DrugAndAlcoholTesting.pdf>
- <https://law.justia.com/codes/mississippi/2013/title-9/chapter-23/>
- MS Dept of Child Protection Services Section 5:3
- <https://www.drugabuse.gov/drug-topics/trends-statistics/overdose-death-rates>

22

RESOURCES Cont'd

- <https://www.ndwa.org/drug-free-workplace/industry-statistics/>
- https://www.stopmethaddiction.com/Meth_Babies.htm

23